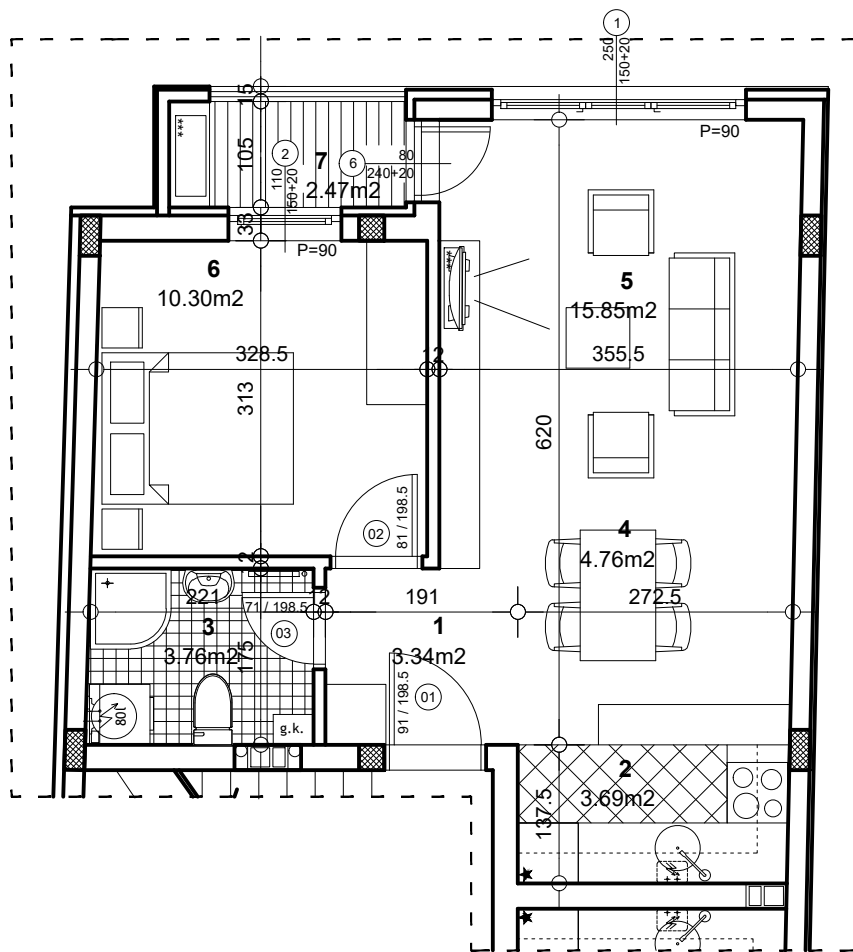


osnova stana
R = 1:75



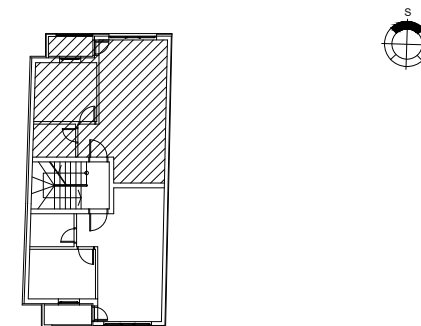
STAN 2 - DVOSOBAN

1	ULAZ	3.34 m²
2	KUHNJA	3.69 m²
3	KUPATILO	3.76 m²
4	TRPEZARIJA	4.76 m²
5	DNEVNA SOBA	15.85 m²
6	SPAVAĆA SOBA	10.30 m²
7	LODJA	2.47 m²

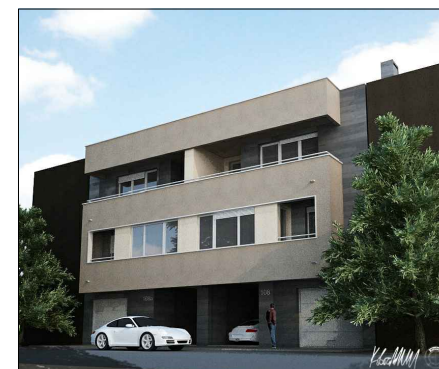
UKUPNO STAN 2: **44.17 m²**

- 3% **42.85 m²**

OSNOVA I SPRATA



ul. Petefi Šandora



Petefi Šandora 108a

SPRAT I/STAN 2