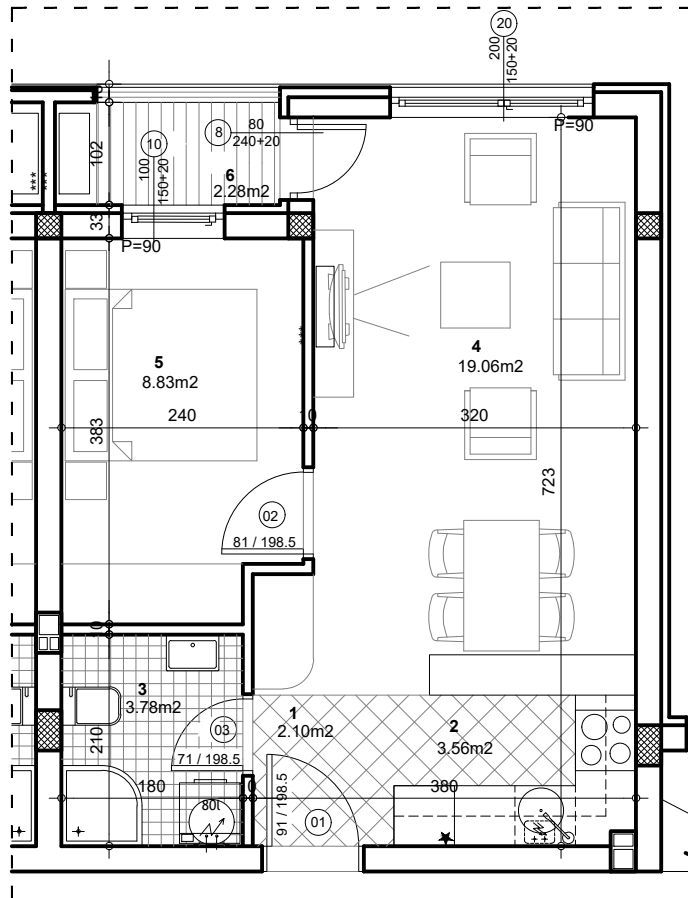


**osnova stana**  
**R = 1:75**



**STAN 7 - DVOSOBAN**

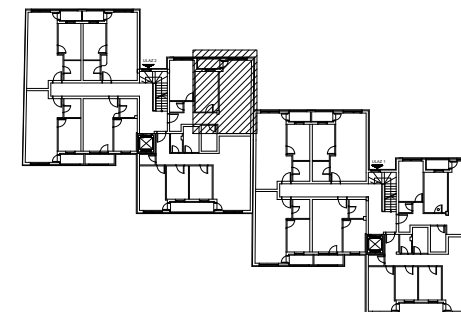
<b>1</b>	<b>ULAZ</b>	<b>2.10 m<sup>2</sup></b>
<b>2</b>	<b>KUHINJA</b>	<b>3.56 m<sup>2</sup></b>
<b>3</b>	<b>KUPATILO</b>	<b>3.78 m<sup>2</sup></b>
<b>4</b>	<b>DNEVNA SOBA SA TRPEZ.</b>	<b>19.06 m<sup>2</sup></b>
<b>5</b>	<b>SPAVAĆA SOBA</b>	<b>8.83 m<sup>2</sup></b>
<b>6</b>	<b>LODJA</b>	<b>2.28 m<sup>2</sup></b>

**UKUPNO STAN 7 : 39.61 m<sup>2</sup>**

**- 3% 38.42 m<sup>2</sup>**

**OSNOVA I SPRATA**

ul. Nova 1



**Palmotičeva bb**

**ULAZ 2/I SPRAT/STAN 7**