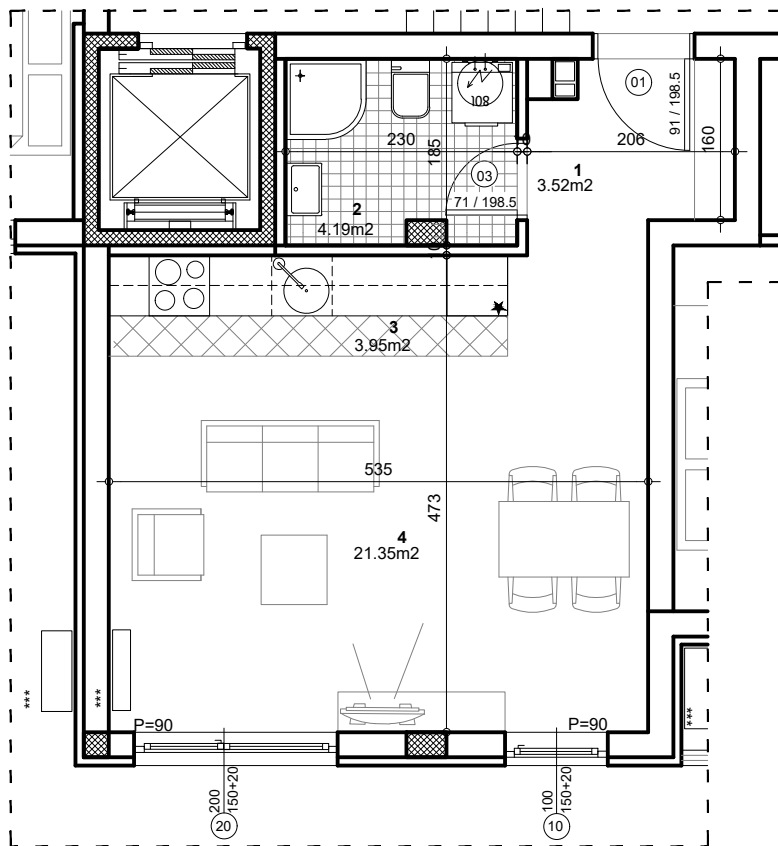


osnova stana
R = 1:75

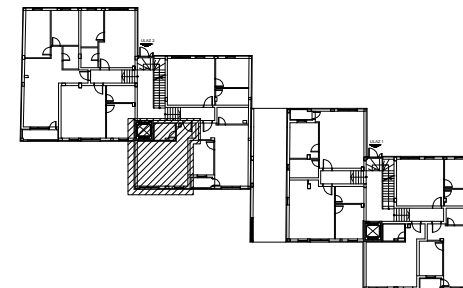


STAN 4 - GARSONJERA

1	ULAZ	3.52 m²
2	KUPATILO	4.19 m²
3	KUHINJA	3.95 m²
4	DNEVNA SOBA SA TRPEZ.	21.35 m²
UKUPNO STAN 4 :		33.01 m²
		- 3% 32.02 m²

OSNOVA PRIZEMLJA

ul. Nova 1



Palmotičeva bb

ULAZ 2/PRIZEMLJE/STAN 4