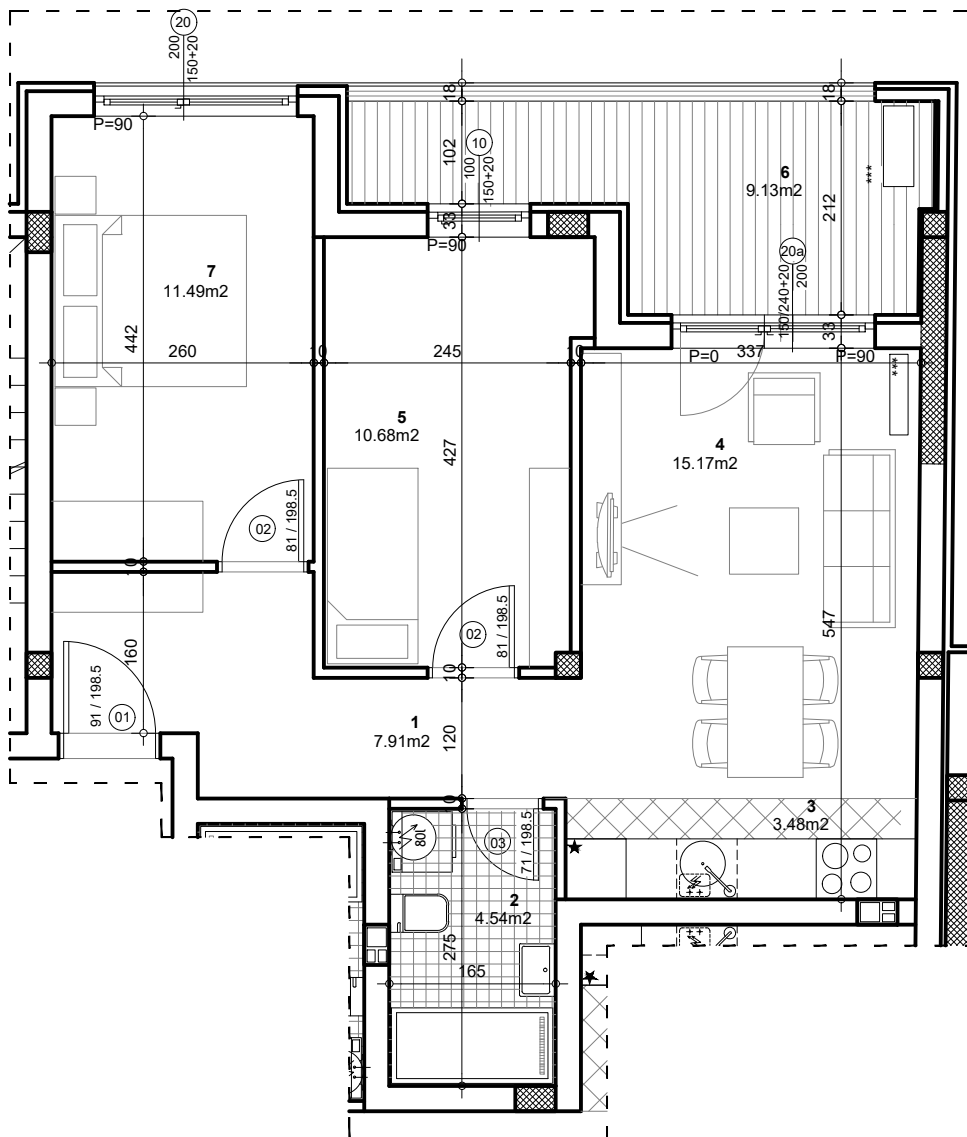


osnova stana
R = 1:75

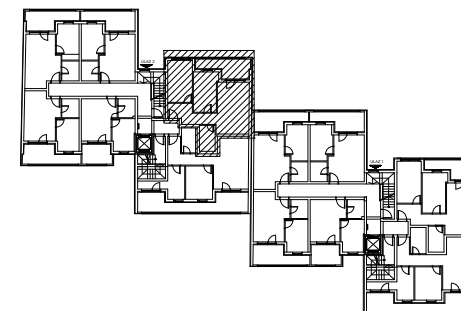


STAN 25 - TROSOBAN

1	ULAZ/HODNIK	7.91 m²
2	KUPATILO	4.54 m²
3	KUHINJA	3.48 m²
4	DNEVNA SOBA SA TRPEZ.	15.17 m²
5	SPAVAĆA SOBA	10.68 m²
6	BALKON	9.13 m²
7	SPAVAĆA SOBA	11.49 m²
UKUPNO STAN 25 :		62.39 m²
		- 3%
		60.52 m²

OSNOVA POTKROVLJA

ul. Nova 1



Palmoćeva bb

ULAZ 2/POTKROVLJE/STAN 25