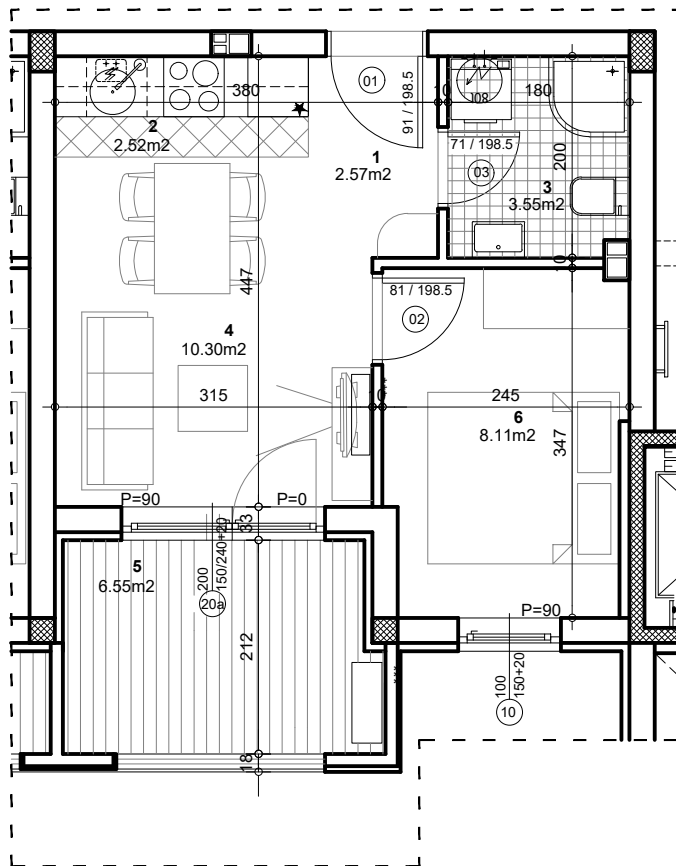


osnova stana
R = 1:75



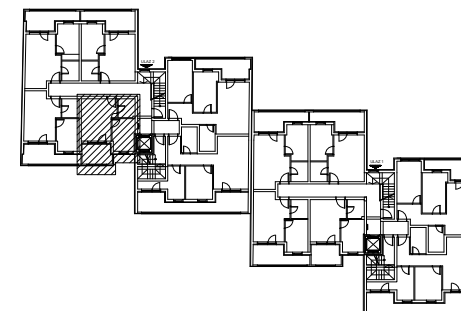
STAN 22 - DVOSOBAN

1	ULAZ	2.57 m²
2	KUHINJA	2.52 m²
3	KUPATILO	3.55 m²
4	DNEVNA SOBA SA TRPEZ.	10.30 m²
5	LODJA	6.55 m²
6	SPAVAĆA SOBA	8.11 m²

UKUPNO STAN 22 :		33.60 m²
		- 3% 32.59 m²

OSNOVA POTKROVLJA

ul. Nova 1



Palmoćeva bb

ULAZ 2/POTKROVLJE/STAN 22