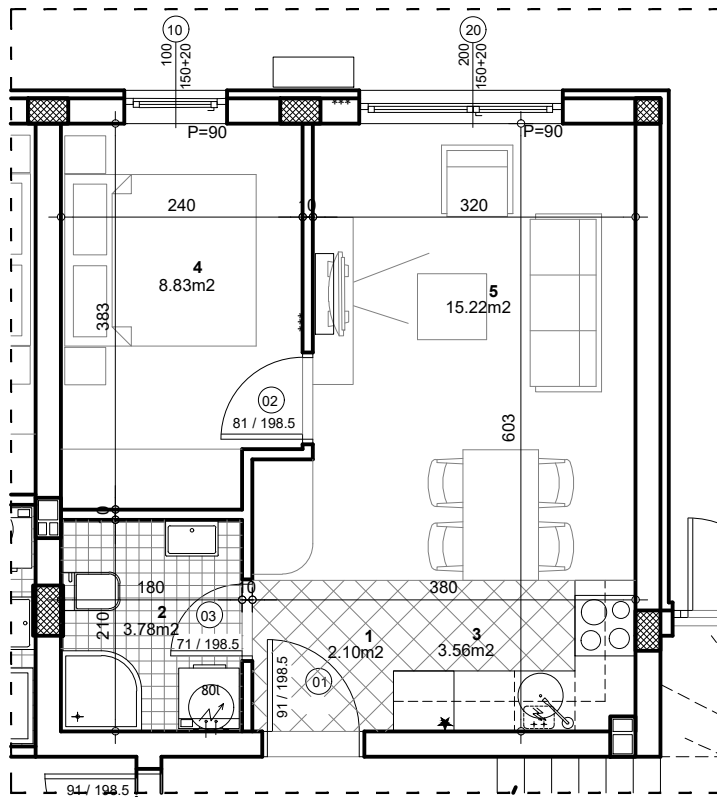


osnova stana
R = 1:75

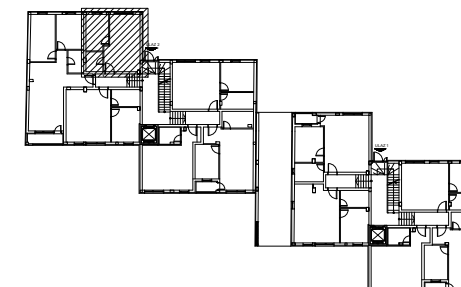


STAN 1 - DVOSOBAN

1	ULAZ	2.10 m ²
2	KUPATILO	3.78 m ²
3	KUHINJA	3.56 m ²
4	DNEVNA SOBA SA TRPEZ.	15.22 m ²
5	SPAVAĆA SOBA	8.83 m ²
UKUPNO STAN 1 :		33.49 m²
		- 3% 32.49 m²

OSNOVA PRIZEMLJA

ul. Nova 1



Palmotićevo bb

ULAZ 2/PRIZEMLJE/STAN 1