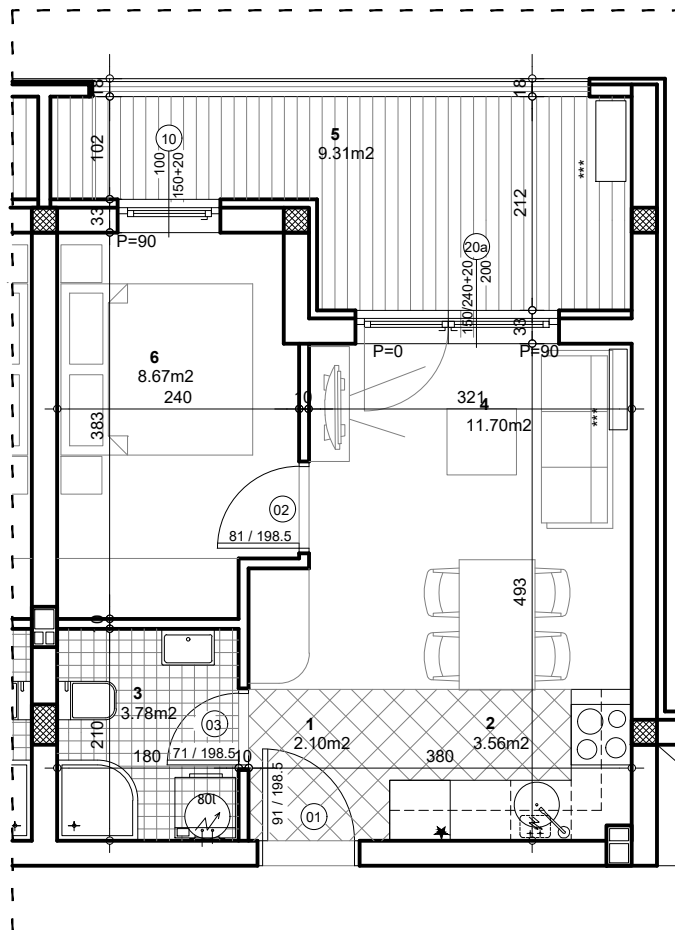


osnova stana
R = 1:75



STAN 19 - DVOSOBAN

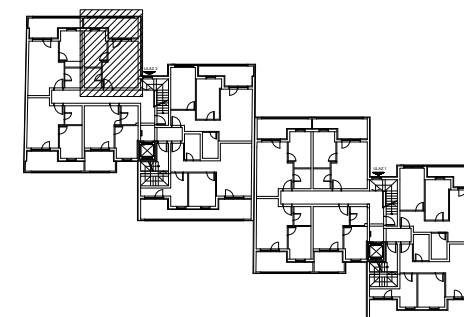
1	ULAZ	2.10 m²
2	KUHINJA	3.56 m²
3	KUPATILO	3.78 m²
4	DNEVNA SOBA SA TRPEZ.	11.70 m²
5	LODJA	9.31 m²
6	SPAVAĆA SOBA	8.67 m²

UKUPNO STAN 19 : **39.12 m²**

- 3% **37.94 m²**

OSNOVA POTKROVLJA

ul. Nova 1



Palmotićeve bb

ULAZ 2/POTKROVLJE/STAN 19