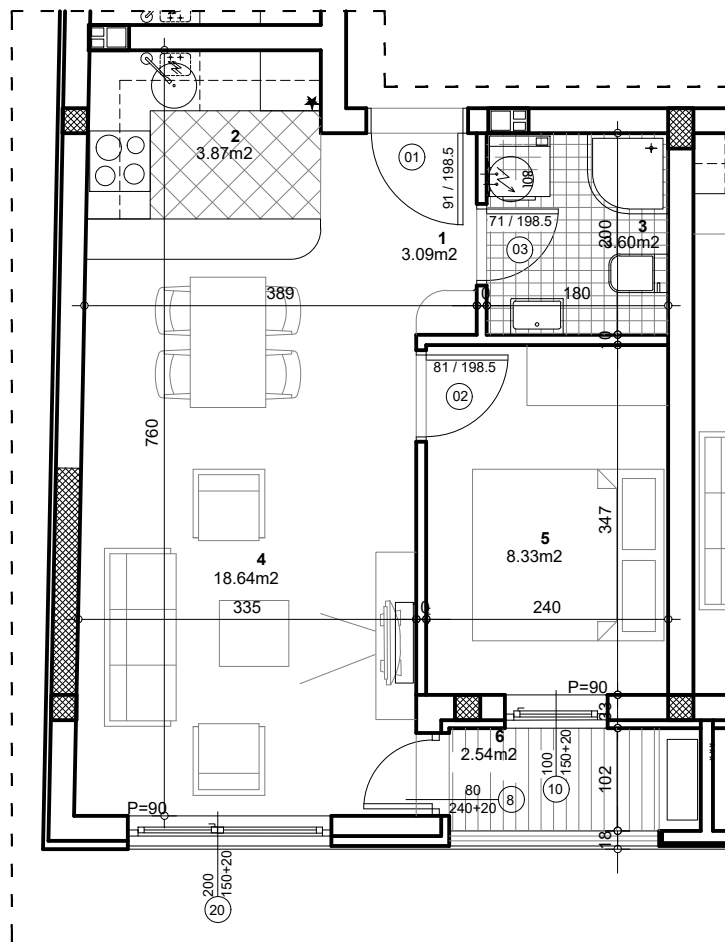


osnova stana
R = 1:75



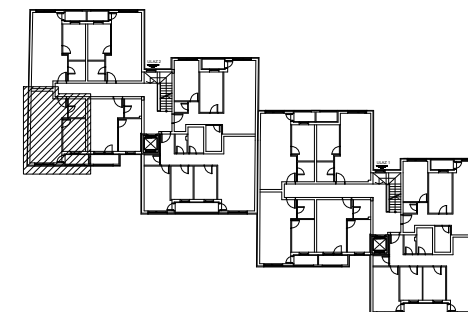
STAN 15 - DVOSOBAN

1	ULAZ	3.09 m²
2	KUHINJA	3.87 m²
3	KUPATILO	3.60 m²
4	DNEVNA SOBA SA TRPEZ.	18.64 m²
5	SPAVAĆA SOBA	8.33 m²
6	LODJA	2.54 m²

UKUPNO STAN 15 :		40.08 m²
		- 3% 38.88 m²

OSNOVA II SPRATA

ul. Nova 1



Palmotičeva bb

ULAZ 2/II SPRAT/STAN 15