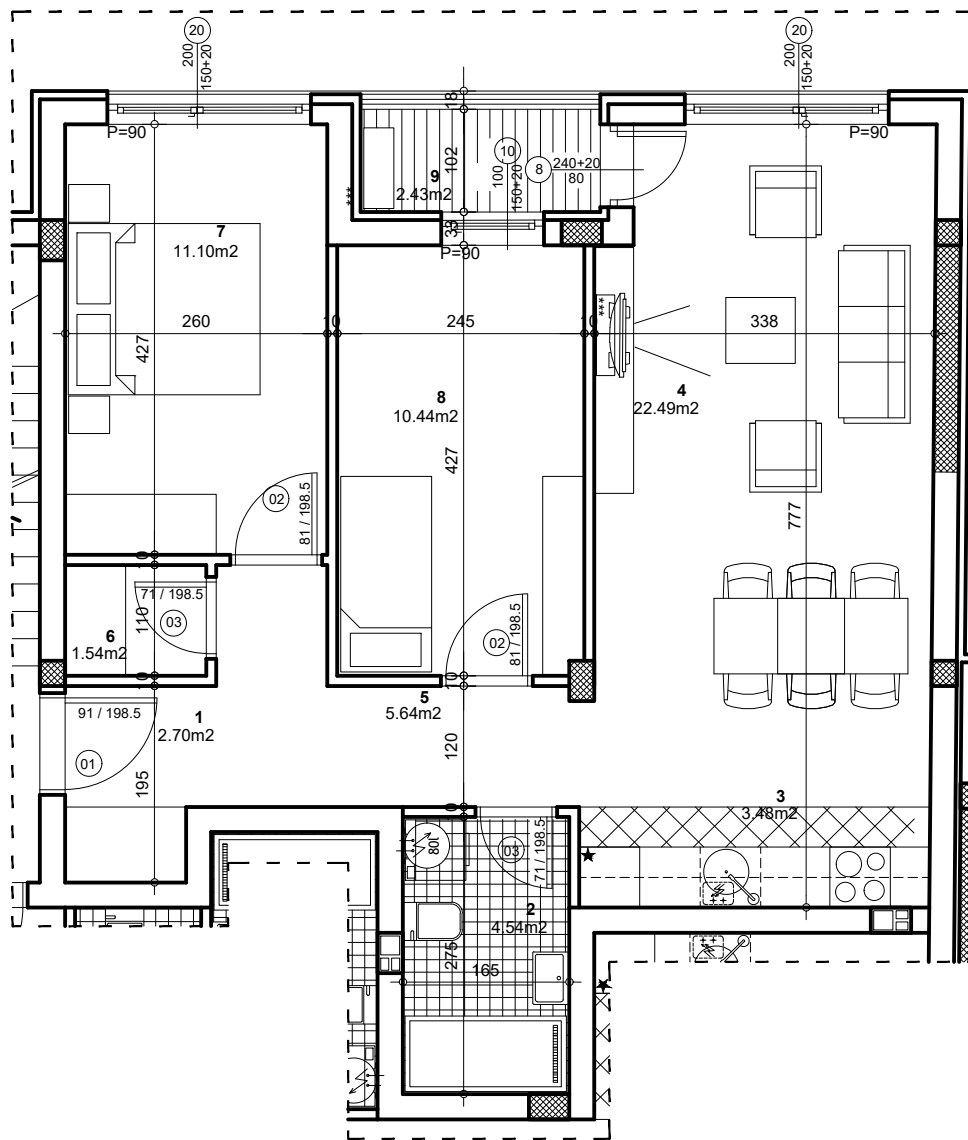


osnova stana
R = 1:75



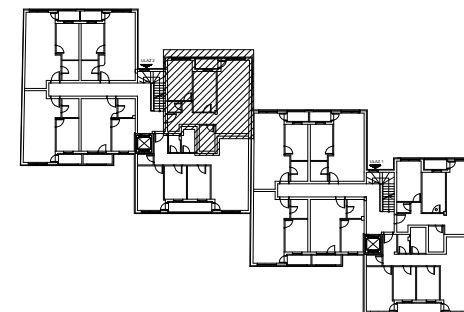
STAN 12 - TROSOBAN

1	ULAZ	2.70 m²
2	KUPATILO	4.54 m²
3	KUHINJA	3.48 m²
4	DNEVNA SOBA SA TRPEZ.	22.49 m²
5	HODNIK	5.64 m²
6	GARDEROBA	1.54 m²
7	SPAVAĆA SOBA	11.10 m²
8	SPAVAĆA SOBA	10.44 m²
9	BALKON	2.43 m²

UKUPNO STAN 12 :	64.35 m²
	- 3% 62.42 m²

OSNOVA I SPRATA

ul. Nova 1



Palmoćeva bb

ULAZ 2/I SPRAT/STAN 12