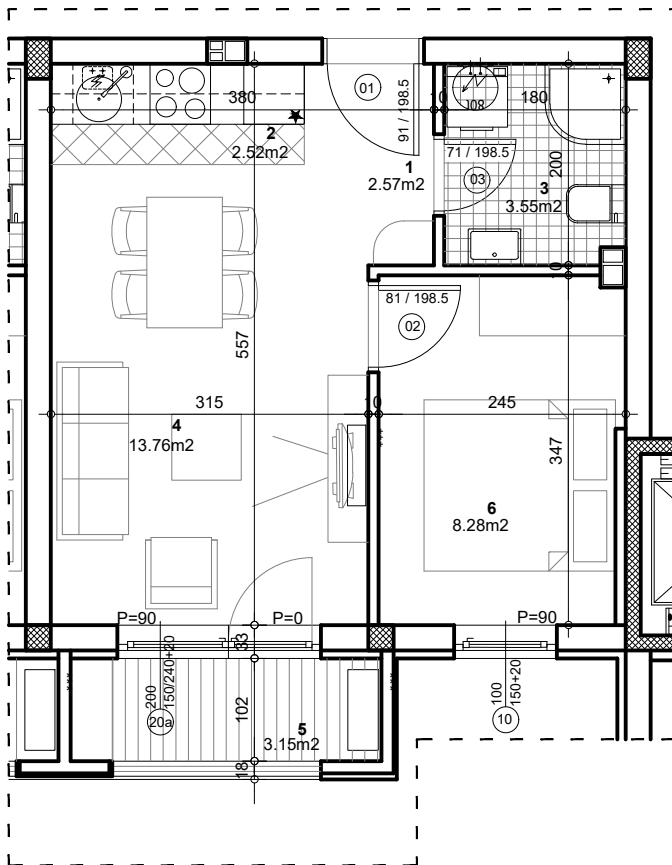


osnova stana
R = 1:75



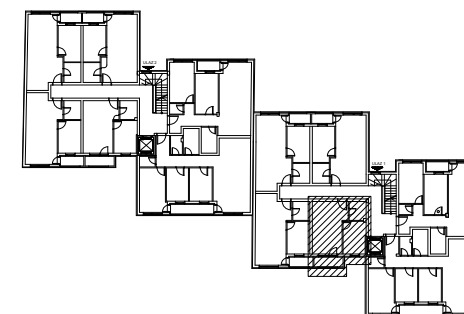
STAN 9 - DVOSOBAN

1	ULAZ	2.57 m²
2	KUHINJA	2.52 m²
3	KUPATILO	3.55 m²
4	DNEVNA SOBA SA TRPEZ.	13.76 m²
5	LODJA	3.15 m²
6	SPAVAĆA SOBA	8.28 m²

UKUPNO STAN 9 :		33.82 m²
		- 3%
		32.81 m²

OSNOVA I SPRATA

ul. Nova 1



Palmotićeva bb

ULAZ 1/I SPRAT/STAN 9