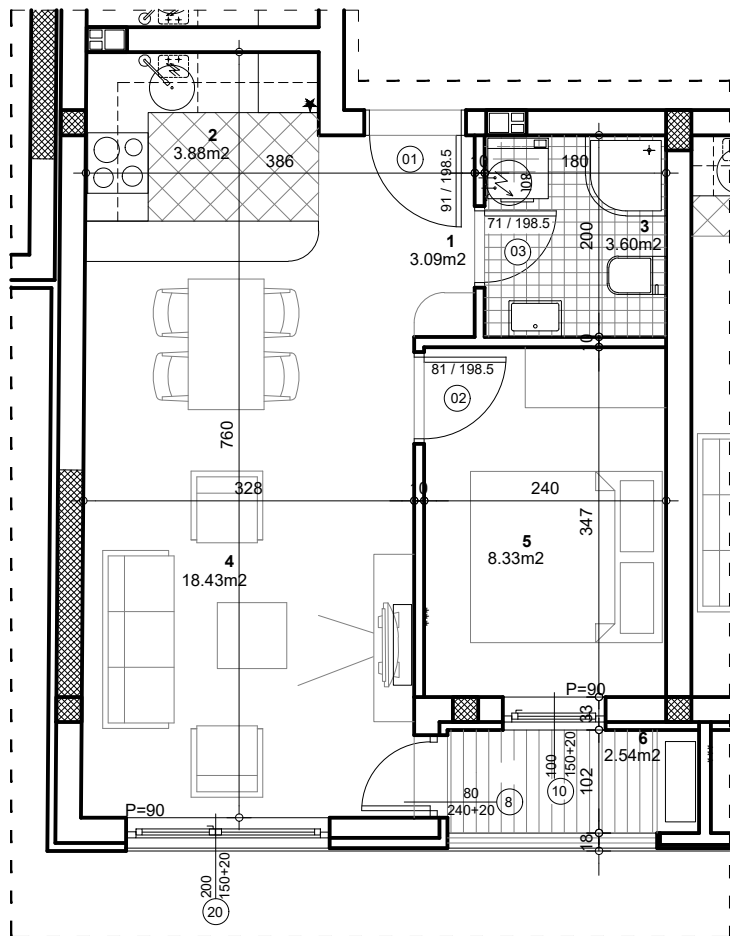


**osnova stana**  
**R = 1:75**



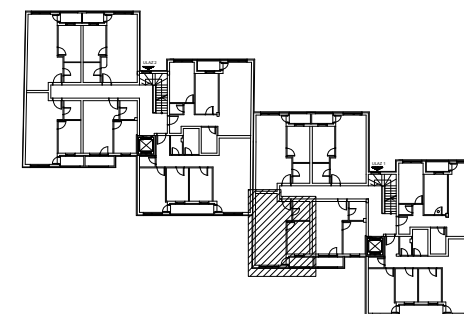
**STAN 8 - DVOSOBAN**

<b>1</b>	<b>ULAZ</b>	<b>3.09 m<sup>2</sup></b>
<b>2</b>	<b>KUHINJA</b>	<b>3.88 m<sup>2</sup></b>
<b>3</b>	<b>KUPATILO</b>	<b>3.60 m<sup>2</sup></b>
<b>4</b>	<b>DNEVNA SOBA SA TRPEZ.</b>	<b>18.43 m<sup>2</sup></b>
<b>5</b>	<b>SPAVAĆA SOBA</b>	<b>8.33 m<sup>2</sup></b>
<b>6</b>	<b>LODJA</b>	<b>2.54 m<sup>2</sup></b>

<b>UKUPNO STAN 8 :</b>		<b>39.87 m<sup>2</sup></b>
		<b>- 3% 38.68 m<sup>2</sup></b>

**OSNOVA I SPRATA**

ul. Nova 1



**Palmotićeve bb**

**ULAZ 1/I SPRAT/STAN 8**