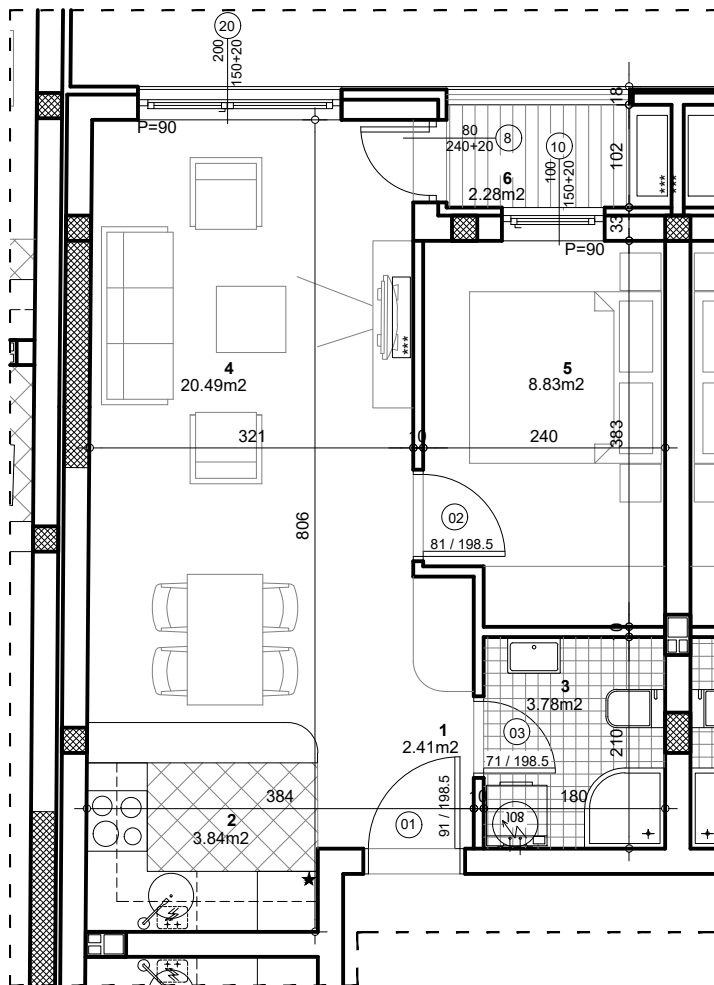


osnova stana
R = 1:75



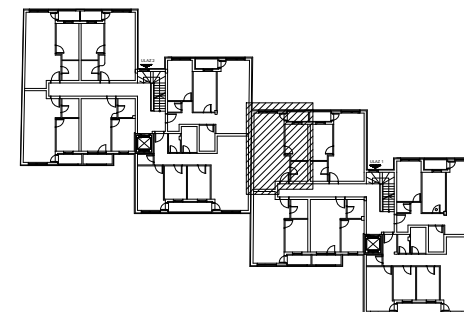
STAN 7 - DVOSOBAN

1	ULAZ	2.41 m²
2	KUHINJA	3.84 m²
3	KUPATILO	3.78 m²
4	DNEVNA SOBA SA TRPEZ.	20.49 m²
5	SPAVAĆA SOBA	8.83 m²
6	LODJA	2.28 m²

UKUPNO STAN 7 :	41.64 m²
	- 3% 40.39 m²

OSNOVA I SPRATA

ul. Nova 1



Palmotičeva bb

ULAZ 1/I SPRAT/STAN 7