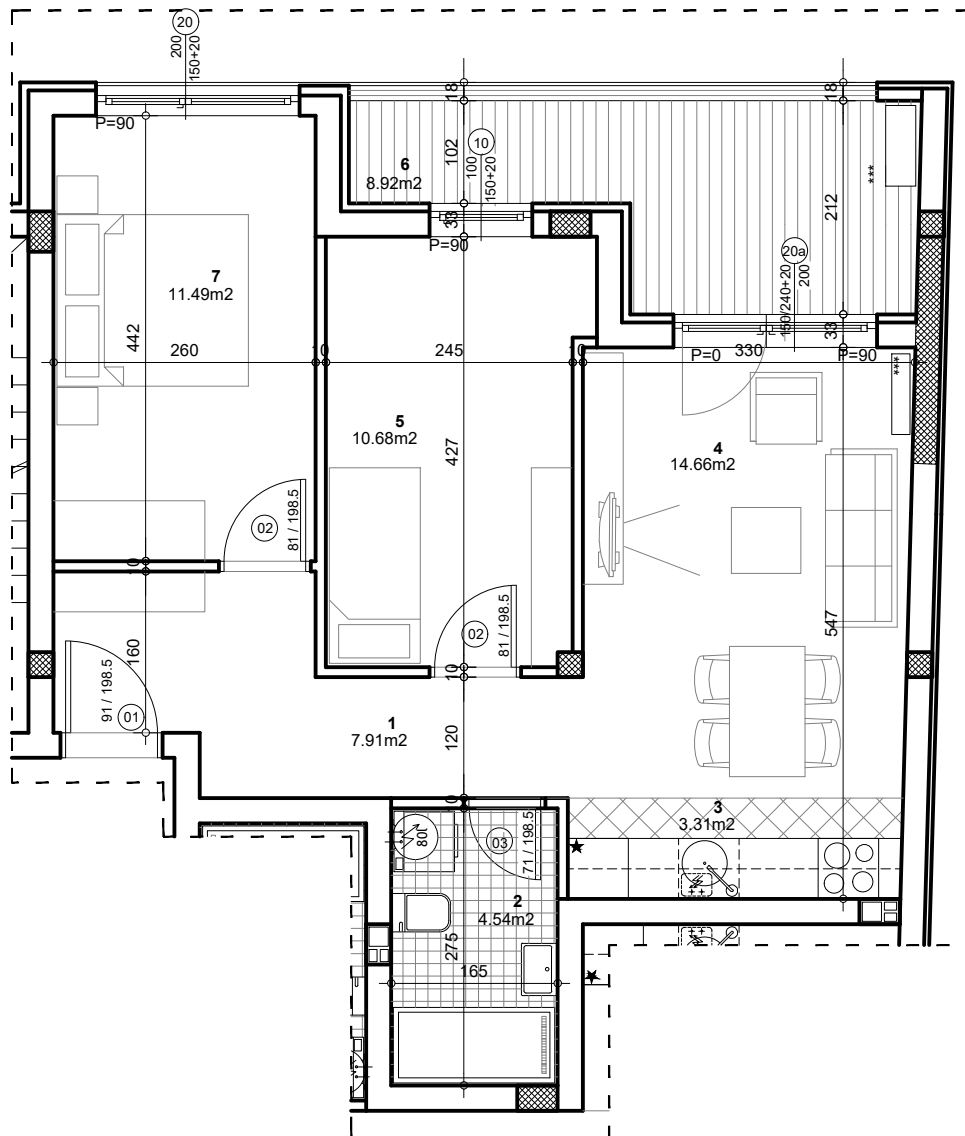


osnova stana
R = 1:75

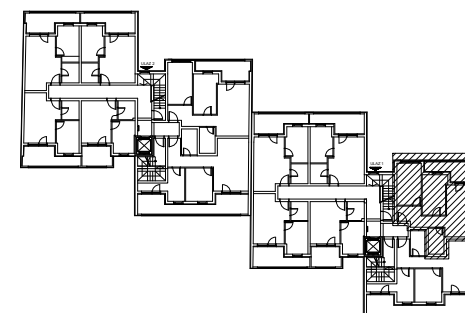


STAN 24 - TROSOBAN

1	ULAZ/HODNIK	7.91 m²
2	KUPATILO	4.54 m²
3	KUHINJA	3.31 m²
4	DNEVNA SOBA SA TRPEZ.	14.66 m²
5	SPAVAĆA SOBA	10.68 m²
6	BALKON	8.92 m²
7	SPAVAĆA SOBA	11.49 m²
UKUPNO STAN 24 :		61.51 m²
		- 3% 59.66 m²

OSNOVA POTKROVLJA

ul. Nova 1



Palmoćeva bb

ULAZ 1/POTKROVLJE/STAN 24